

OUR SERVICES

OUR TEAM

RESOURCES

CONTACT US

Who Examines a Social Security Disability Claim?

DDS Examiner & ALJ



What many people may not realize is that there are two types of people that examine a Social Security Disability claim. A DDS examiner and an Administrative Law Judge (ALJ) both have the power to approve or deny a Social Security Disability claim; however, each is responsible for examination of a claim at different levels in the appeals process. A DDS examiner is responsible for claims at the initial and reconsideration stage. The ALJ is responsible for claims at the hearing level.

When you first apply for Social Security Disability, you are considered .

.. read more [HERE](#).

Health Tip of the Month:

Embrace Nutritional Basics

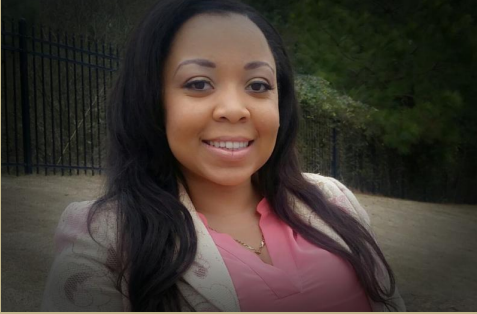
Eating right doesn't have to be difficult, and it doesn't have to take hours out of your day to prepare meals. Forget about fad diets or quick fix solutions. Eat a healthy and balanced diet that includes protein, vegetables, fruit, whole grains, and low fat dairy. Keep it simple and remember to eat in moderation.



Team 100 Feature: Thourearz

Founded by Chelsea Salters

Chelsea's expertise stems over a decade in corporate event management, social event planning and business development. Outside of earning her B.A. Degree in Sociology at Morris College, Chelsea has gained national certifications. She is a National Peer to Peer ROMA Trainer through her Results Oriented Management and Accountability (ROMA) certification. In addition, she is a Character Development Instructor with



Chelsea S. Salters

At a young age, Chelsea began a journey to understand the complexities that abnormal humans face every day. As a result of this journey, she has developed her own venture, THOUEARZ, to provide a sense of normalcy to individuals that are otherwise seen as the minority.

THOUEARZ was developed through Chelsea passionately seeing a need that has not been established to provide a much needed service to help disability-focused individuals or

businesses in their planning endeavors. THOUEARZ is a one-stop platform for disability-focused events across the nation.

THOUEARZ will from start to finish patiently fulfill your needs to plan that party for your disabled loved one or organize a corporate event for your disability-focused business or simply help you flourish in the disability environment.

YOUR VISIONS ARE HEARD BY OUR EARZ- THOUEARZ!



April is Autism Awareness Month:

Facts About Autism:



April is Autism Awareness Month. We regularly have people contact us wondering if their son or daughter who is affected by autism would qualify for Social Security Disability. If the symptoms are severe enough, then they most certainly can. In honor of Autism Awareness, we'd like to highlight some important facts about autism.

Autism affects 1 in 68 children, and boys are 5 times more likely to suffer from autism than girls. Autism is one of the fastest growing developmental disorders in the U.S. There is still no cure for autism, and the average cost per year is usually around \$60,000 for a family with a child that has autism. That's in addition to regular expenses. If you know someone that suffers from autism or know a family that is affected by it, be sure to give them the emotional support they need as

caring for a special needs child can be very difficult.

National Siblings Day. Celebration of Family

Did you know April 10 was National Siblings Day? Family is so important. They laugh with you and cry with you. They love you and support you through the good times and the bad. With them, our life is a little bit more complete.



The KLF Staff with their siblings!

Calendar of Events: April 2017

- April 3-7: Fulton Co Spring Break
- April 12th: In Court, Macon, GA
- April 13th: In Court, Brunswick, GA
In Court, Atlanta, GA
- April 16th: Easter
- April 19th: In Court, Atlanta, GA
- April 20th: In Court, Atlanta, GA
- April 21st: In Court, Savannah, GA
- April 26th: In Court, Atlanta, GA
- April 27th: In Court, Atlanta, GA

| APRIL 2017 | | | | | | |
|------------|-----|-----|-----|-----|-----|-----|
| Sun | Mon | Tue | Wed | Thu | Fri | Sat |
| | | | | | | 1 |
| 2 | 3 | 4 | 5 | 6 | 7 | 8 |
| 9 | 10 | 11 | 12 | 13 | 14 | 15 |
| 16 | 17 | 18 | 19 | 20 | 21 | 22 |
| 23 | 24 | 25 | 26 | 27 | 28 | 29 |
| 30 | | | | | | |

Contact Us!

The Khaki Law Firm

Main Office: 3510 Old Milton Parkway
Alpharetta, GA 30005

By Appointment Only: Buckhead & Marietta

Local (678) 228-8688
Toll Free 1 (866) 394-4925
TheKhakiLawFirm.com

Stay Connected



"Guiding you through the
Disability Maze!"



CLIENT SATISFACTION
SOCIAL SECURITY & DISABILITY
LAW DIVISION
American Institute of
Legal Counsel™

Super Lawyers